

Diamond Coat V2

Roll it. Spray it. Pour it

INFINITY
EFFECTS[™]



Introducing Diamond Coat V2:
Revolutionizing the industry straight from the tin.
Roll it. Spray it. Pour it. Install It Your Way - The Infinity Way!

Introducing **Diamond Coat V2** the next evolution of our renowned scratch-resistant polyaspartic coating, engineered to outperform in every category. **Diamond Coat V2** delivers enhanced clarity, increased durability, and a noticeably flatter, higher-gloss finish thanks to its improved INFINITY technology. Available in high gloss, it offers exceptional aesthetic versatility for any project.

Experience unmatched convenience with **Diamond Coat V2's** new spray-ready, pour able formula designed to be applied directly from the tin using standard spray equipment or pour application. This upgraded version provides smoother flow, better levelling, and superior coverage, ensuring a flawless finish with less material and reduced labour.

With advanced UV stabilisers, **Diamond Coat V2** forms an ultra-protective barrier that shields surfaces from sunlight, abrasion, and wear. The cured film is hard yet flexible, delivering long-term resilience even in demanding, high-traffic environments.

Elevate your surfaces with the improved protection and performance of **Diamond Coat V2** where enhanced gloss, scratch resistance, and next-generation chemistry combine to deliver a finish that truly stands the test of time.



Diamond Coat Advantages

Experience Unmatched Durability in High-Traffic Areas:

- ✓ Diamond Coat V2 ensures lasting performance, providing years of reliable service even in demanding environments.
- ✓ It is designed to withstand the rigors of high-traffic areas, offering unmatched durability and resilience.

Unwavering Protection for All Substrates:

- ✓ Shield your surfaces from scratches and abrasions with the trusted defense of Diamond Coat V2.
- ✓ It provides comprehensive protection across various substrate types, ensuring long-lasting surface integrity.

Increased Adhesion & Sprayability:

- ✓ Diamond Coat V2 offers increased adhesion thanks to its new matrix.
- ✓ Now fully sprayable! Mix A & B and let the gun rip to get that super flat finish.

Efficiency and Ease in Application:

- ✓ Diamond Coat V2 is designed with user-friendliness in mind, making it easy to apply and fast to cure.
- ✓ Its streamlined application process enables efficient workflow without compromising on quality.

Experience the Strength of DIAMOND COAT V2:

- ✓ With Diamond Coat V2, durability meets practicality, ensuring paramount protection for your surfaces.
- ✓ It exceeds expectations in terms of performance, providing unmatched strength and reliability.



Diamond Coat V2

Roll it. Spray it. Pour it



COMMON APPLICATIONS

Suitable for protecting and sealing various types of decorative surfaces, providing defense against heavy foot traffic, UV light, and moisture damage. Used in most Infinity Effects Systems for its durability.

SUBSTRATES & PREPARATION

When applying **Diamond Coat V2** to newly installed decorative substrates supplied by Infinity Effects, no additional preparation is required. For old resin substrates in good condition, thorough cleaning and abrasion are necessary before applying **Diamond Coat V2**. Timber surfaces should be sanded smooth and primed with Polyurea Rapid Prime V2. After the primer coat has cured, the timber should be abraded again before applying **Diamond Coat V2**.

For a full list of applications please contact Infinity or one of its representatives.

APPLICATION CONDITIONS

Diamond Coat V2 should be applied to dry surfaces free from condensation as it is moisture sensitive until cured. It can be applied in all temperature conditions down to 0°C!

MIXING

Combine the entire can of hardener (Part B) with the **Diamond Coat V2** resin (Part A) and mix thoroughly for 2-3 minutes. An electric mixer is recommended for proper component incorporation. Ensure all materials on the sides and bottom of the container are well mixed. As the resin and hardener react, heat will be generated, accelerating the reaction. **The pot life is shorter with larger amounts of resin due to increased heat generation.** If a smaller quantity is needed or the material cannot be used within the pot life, weigh out the resin and hardener in the proportions specified on the label using digital scales. Visit our website for detailed mixing instructions or please contact Infinity or one of its representatives.

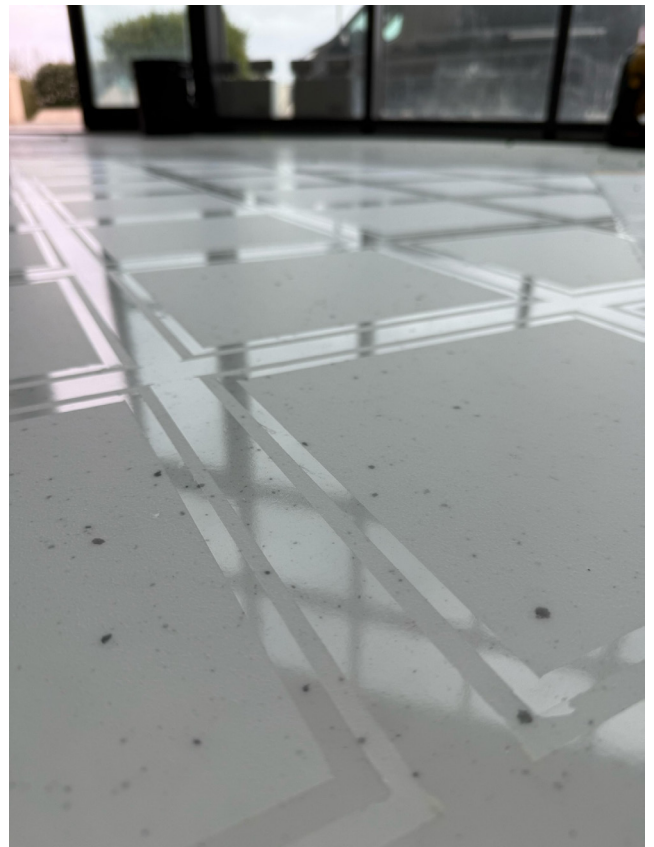
APPLICATION

For larger areas, we recommend using a squeegee to spread the mixed **Diamond Coat V2** evenly. Then, apply an even coat using a short or medium pile roller to achieve full coverage. Apply **Diamond Coat V2** generously to form a thick and continuous film on the surface.

OVER-COATING

Diamond Coat V2 can be overcoated as soon as it is dry enough to walk on but should be overcoated within the time indicated on the provided table. If **Diamond Coat V2** is allowed to cure beyond the maximum over-coating time, glossy areas must be abraded before applying an additional coat.

Order your **Diamond Coat V2** directly from Infinity Effects or through our global distribution agents. Please note that all Infinity Effects products are sold according to our Standard Conditions of Sale. While we aim to provide helpful advice, we can only guarantee results for uses explicitly confirmed in writing by Infinity Effects and the specified representative.



Diamond Coat V2

Roll it. Spray it. Pour it



DIAMOND COAT | Specification

Type	Polyaspartic resin
Mix Ratio	See label on the tin
Hardener	X2
Resin density	1.00
Solids content including hardener	95.5%
Colour	Clear
Solvent	Ask Representative (Infinity Spray Assist)
Coverage	6 - 8 m2 per litre

DIAMOND COAT Standard cure Pot life and cure times. Minutes

Temperature °C	0 - 15	15 - 25	25+
Pot life	25 - 35	15 - 25	10 - 20
Touch dry	35 - 45	20 - 35	15 - 20
Light traffic set time	70 - 90	45 - 60	20 - 30

DIAMOND COAT (Spray Assist 5%) Pot life and cure times. Minutes

Temperature °C	0 - 15	15 - 25	25+
Pot life	40 - 45	25 - 35	15 - 25
Touch dry	70 - 80	45 - 55	20 - 30
Light traffic set time	110 - 130	70 - 90	35 - 45



DISCLAIMER: Customers are advised to thoroughly read and adhere to the instructions provided to ensure the optimum finish and performance of our products. The information presented is based on results gained from experience and tests and is believed to be accurate. However, we do not accept liability for any loss or damage attributable to reliance on this information, as conditions of use may lie outside our control. Any deviation by the user from these instructions may affect the performance of the products, and therefore, such actions are not advised. In such circumstances, Infinity Effects will not be held responsible.

Users should always conduct sufficient tests to establish the suitability of any products for their intended applications. While we strive to ensure consistency of color in production, slight variations in shade may occur from batch to batch.

Note: If you are unsure about the compatibility of Infinity Effects Coating with the substrate surface, we strongly recommend conducting a small test in a discreet area before applying it to the entire floor. This precaution will help ensure a successful and satisfactory outcome.

